


**REF** FOB-9C36

# Rapid Response™ Fecal Immunochemical Test (FIT)

## CLIA Waived

### CANCER SCREENING

- ✓ No lab visit required for testing
- ✓ Accuracy not affected by diet - No fasting required
- ✓ Aids in the early detection of colorectal cancer
- ✓ Annual testing recommended by the CDC for adults 45+\*



### Description:

The Rapid Response™ Fecal Immunochemical Test (FIT) is a rapid chromatographic immunoassay for the qualitative detection of human occult blood in human fecal specimens, which may be an early indication of gastrointestinal problems such as colorectal cancer, ulcers, polyps or other gastrointestinal problems.

The Rapid Response™ FIT requires no dietary or medication restrictions prior to use and delivers an overall accuracy of 98.0%. This represents a significant advancement over traditional guaiac-based fecal occult blood tests, which are limited by lower sensitivity and specificity and require dietary restrictions before testing.

Offer your patients a more convenient, highly accurate screening solution, without the need for a lab visit, with the Rapid Response™ FIT.

### Kit Contents:

- 12 Individual pouches each with a test cassette per box (Kit contains 3 boxes)
- 12 specimen collection tubes with extraction buffer per box (Kit contains 3 boxes)
- Product Insert

### Details:

**Sample:** Fecal Sample

**Format:** Cassette

**Time-to-Result:** 5 minutes

**Storage Condition:** 35.6-86°F/2-30°C

**Test Principle:** Lateral Flow Assay

## Ordering Information

Product Code	Product Name	Contents
FOB-9C36	Fecal Immunochemical Test (FIT)	36 Tests

\*The CDC recommends adults age 45 to 75 be screened for colorectal cancer annually.

Centers for Disease Control and Prevention. (2025, February 26). Screening for colorectal cancer. U.S. Department of Health and Human Services. <https://www.cdc.gov/colorectal-cancer/screening/index.html>

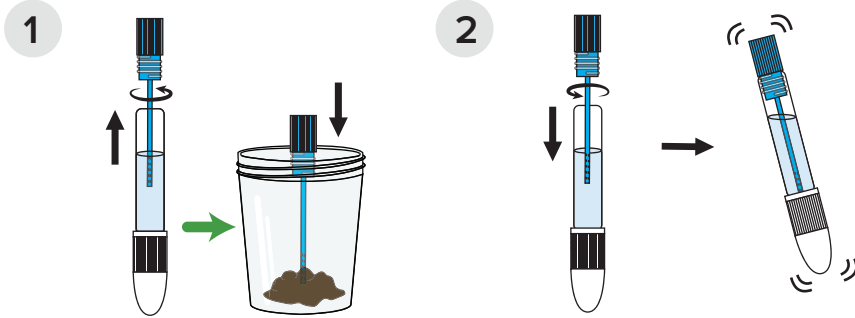


**SCAN QR CODE** to visit our website for more resources.

Contact us for pricing or bulk discounts at [orders@lochnessmedical.com](mailto:orders@lochnessmedical.com) or call us at +1 888-506-2658

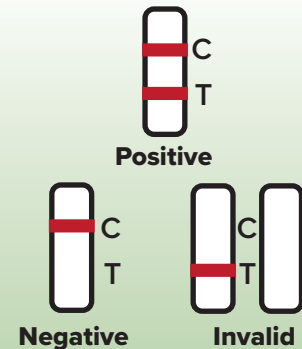
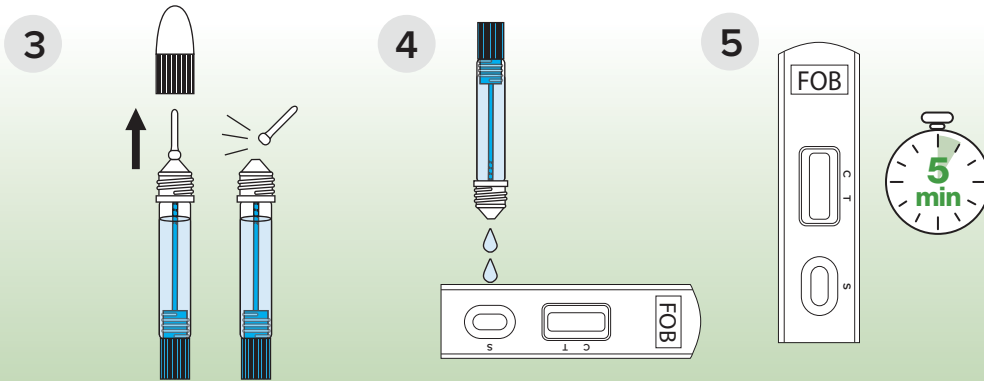
[www.lochnessmedical.com/Product/colon-cancer-screening-kits](http://www.lochnessmedical.com/Product/colon-cancer-screening-kits)

## Specimen Collection



1. Unscrew blue cap, and stick into specimen 6 times before placing back into collection buffer.
2. Insert sampled applicator back into the tube. Shake the tube for 5 seconds to release and disperse stool sample into collection buffer.
3. Remove cassette from foil pouch.
4. Unscrew small white cap from the collection bottle cap, and break tip.
5. Squeeze 3 drops of fecal sample solution in to well of cassette. Read results between 5-10 minutes.

## Testing Procedure



For illustrative purposes only. Refer to product insert for the full instructions for use.

## Clinical Evaluations

A study was conducted to evaluate the Rapid Response™ FIT - Fecal Immunochemical Test and compare results with another commercially available Fecal Occult Rapid Test.



\*95% Confidence Interval



Lochness Medical Supplies Inc. is a premier distributor of Rapid Response™ products in the US and trusted partner, offering expert consulting, innovative high-quality diagnostic solutions backed by market-leading research, flexible customization, and unmatched support.

### Order Today!

Call us: +1 888-506-2658

Email us: [orders@lochnessmedical.com](mailto:orders@lochnessmedical.com)

Shop Online: [www.lochnessmedical.com](http://www.lochnessmedical.com)

## \$17.63 Medicare Reimbursement

\*Estimate was determined based on previous Medicare Reimbursements for FOBTs. Verify payer policy and current fee schedule before billing.

Test/Procedure	CPT/HCPCS Code	Modifier
Medicare / Wellness over 45	G0328	QW
Insurance / Wellness over 50	82274	QW
Symptomatic Medicare / Insurance	82274	QW
Screening Fecal-Occult Blood Test - Once every 12 months for patients age 50 and older.	82270 G0328	

ICD-10 Code	Description
Z12.12	Encounter for screening for malignant neoplasm of rectum
Z12.11	Encounter for screening for malignant neoplasm of colon
Z85.038	Personal history of other malignant neoplasm of large intestine
D12.6	Benign neoplasm of colon, unspecified
K92.1 - Melena	Melena; black "tarry" feces that are associated with upper gastrointestinal bleeding
R19.5	Other fecal abnormalities
R19.7	Diarrhea, unspecified
R19.8	Other specified symptoms and signs involving the digestive system and abdomen
R10.9	Unspecified abdominal pain
R10.84	Generalized abdominal pain

## Other Rapid Response™ Fecal Immunochemical Test (FIT) Products

PRODUCT #	TEST	DETAILS	QUANTITY
FOB-0M	Rapid Response™ Fecal Immunochemical Test (FIT) Mailers	Paper kit designed for at-home collection of spontaneously passed stool (SPS) specimens.	50
FOB-9V30	Rapid Response™ Fecal Immunochemical Test (FIT) Buffer Collection Kit	Buffer/Collection tubes are specially designed to prevent overloading of the sample tube, reducing invalid results.	30
FOB-9V-Ctrl	Rapid Response™ Fecal Immunochemical Test (FIT) External Controls (+/-)	External control solutions verify FIT test accuracy by producing expected positive and negative results reliably.	1 Pair



Products, and/or services details are current when published and subject to change without notices. Certain products or services may be limited by federal, state, provincial or local regulations. Rapid Response™ is a trademark of BTNX Inc. (C) 2026, Lochness Medical Supplies Inc. All Rights Reserved.

### Order Today!

Call us: +1 888-506-2658

Email us: [orders@lochnessmedical.com](mailto:orders@lochnessmedical.com)

Shop Online: [www.lochnessmedical.com](http://www.lochnessmedical.com)